

may 2011

AERIAL PHOTOGRAPHY - DOCUMENTATION - INSPECTION - PHOTOGRAMMETRY



Elevate your photography !

Ellipz bvba
Groenpoort 2
3980 Tessenderlo
Belgium

Tel. : +32(0)13/290.640
Fax : +32(0)13/290.670
www.ellipz.be
info@ellipz.be

Ellipz X6-650 multirotor

innovative

What is the Ellipz X6-650 ?

The Ellipz X6-650 is an easy to operate helicopter especially designed for carrying cameras. Control the X6-650 helicopter with the mobile groundstation and simultaneously view the live image from the helicopter on the screen of the mobile groundstation.

Highlights:

- lightweight carbon frame and landinggear
- brushless motors (maintenance free)
- stable and strong frame
- 2 axis gyro corrected and vibration free camera gimbal (digital servo's)
- integrated batteryholder
- GPS and altitude hold functions.
- inclination, acceleration and compass sensors
- safe and easy operation
- selfstabilising
- 2.4 Ghz radio controlled (bi-directional)
- groundstation with telemetry
- coming home function
- 5.8 Ghz diversity live video link
- flight time up to 12' with payload.
- wireless camera triggering

X6-650 figures

total weight 2,6 kg with camera
flighttime up to 12' / battery
6 rotors with 28cm diameter
recommended range 150m
payload up to 500 gram
diameter 65cm (motor/motor)

Ellipz X6 multirotor

easy to fly

Self stabilising !

The flight characteristics of the X6-650 are totally different compared to traditional radio controlled hobby helicopters. With it's numerous sensors is it able to maintain a stable position. The system is also equipped with GPS, altitude and compass sensor. This enables you to bring the X6-650 to any position and let it hover on a selected spot, even in heavy winds. Meanwhile you concentrate on the shots to take using the live image of the X6-650 transmitted to the TFT screen of your mobile groundstation.

Mobile groundstation

The X6-650 and the on-board camera are controlled with the mobile groundstation. This station is equipped with a wireless bi-directional connection. Thus, the pilot is informed with system relevant information (telemetry). The pilot receives information regarding GPS signal, altitude, flighttime, battery voltage etc.

As of July 2011 the mobile station will also include voice warnings. Using an in-ear the pilot is informed of all relevant system information.

Our system comes in standard sizes and equipment. However if you have special wishes like camera or sensor , a modified remote head etc please contact us.

Ellipz X6 multirotor

High Definition video !



HD video recording with GoPro Wide-Hero

Ellipz designed a special gimbal for the GoPro camera. The GoPro HD Wide-Hero enables you to record in HD 1080p quality, everything is recorded in the highest detail. You also don't have to worry about recording times. It enables you to record up to 2,5 hours on 1 battery and up to 9 hours on a 32Gb SD-card.

Our special designed gyro stabilized gimbal with anti-vibration mount enables you to record without vibrations.

Ellipz X6 multirotor

Enormous application potential



Real estate

Produce personal or business based photography, or videography for real estate, music video, motion picture/film/movie use. Use digital photography or high definition video to acquire the aerial visual concepts that enhance your collection of photographs or video to make it the finest.

Commercial Promotion

Promoters and Advertisers are always looking to maximize their return on investment. If you want aerial pictures or video for your promotions, the X6-650 is the perfect solution.

News Media

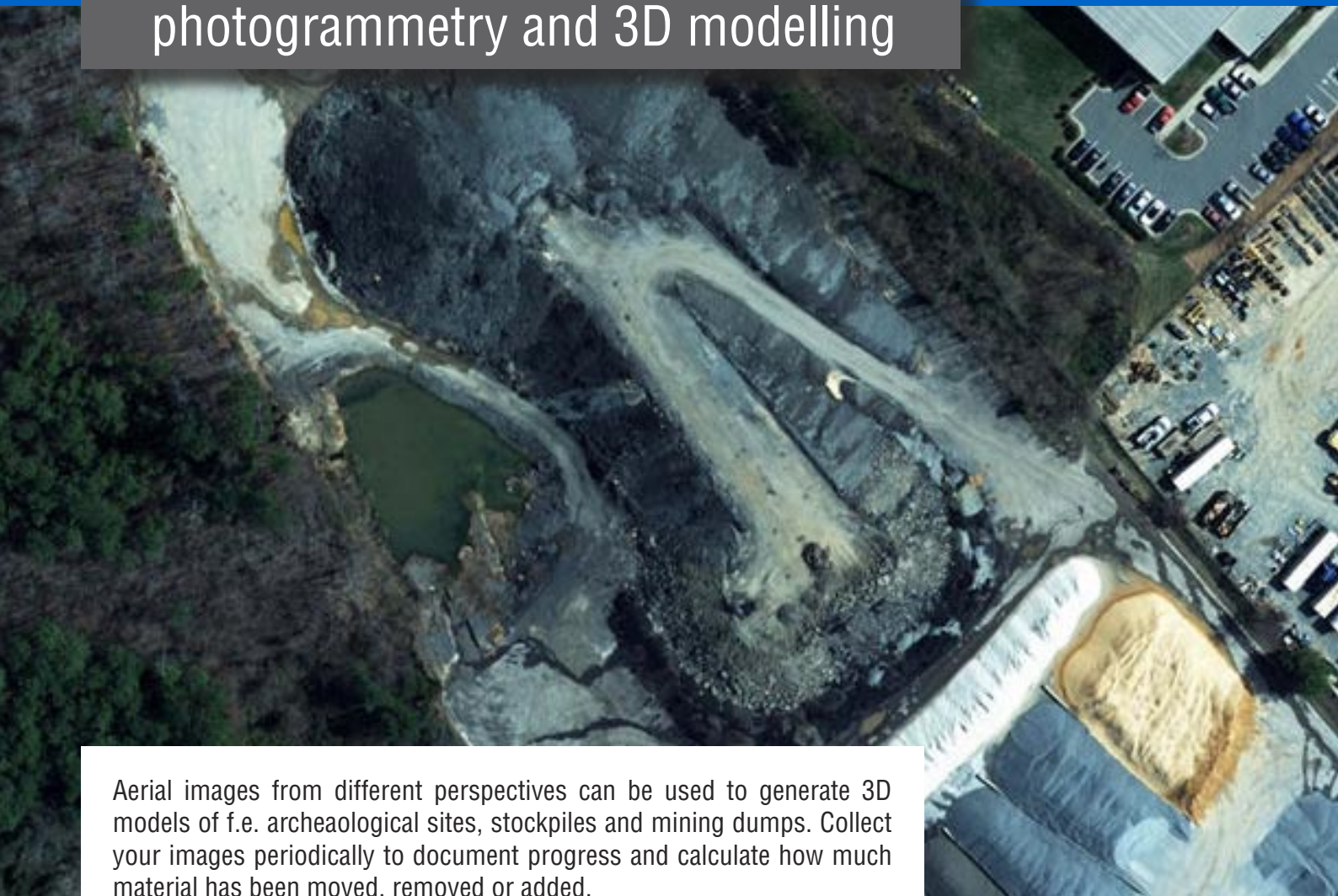
Make your news stories stand out from the rest by getting the angle and perspective the competition isn't getting. Don't be satisfied with pictures that look virtually the same as the competitions because they were taken only a few feet away from theirs. Provide images from locations the competition can't get to because it may be dangerous or too far away, with the Ellipz X6-650 helicopter, see views that are limited to birds and people in low flying aircraft.

Aerial Photography Hobbyist

If you enjoy photography and want to take it to a more elevated level then your answer is here. The remote controlled Ellipz X6-650 helicopter with its high resolution digital camera can provide you with a completely new frontier to experience. No longer be restricted to taking pictures of what you can see from the ground. The Ellipz X6-650 helicopter takes you into a whole new world.

Ellipz X6 multirotor

photogrammetry and 3D modelling



Aerial images from different perspectives can be used to generate 3D models of f.e. archaeological sites, stockpiles and mining dumps. Collect your images periodically to document progress and calculate how much material has been moved, removed or added.

Close range aerial photogrammetry offers much potential for measuring features that can't or aren't being measured otherwise.

We also deliver the photogrammetric software for your purpose.

Ellipz X6 multirotor

Top quality

We only select the best available motors, materials, electronics and additional equipment for our systems. All parts are high quality machined with the latest manufacturing technology.

safe

A traditional helicopter is equipped with a single main rotor and a tail rotor. The main rotor is much larger than the small multirotors on the X6-650. These small rotors are pretty harmless compared to the large single rotor.

The bi-directional radio controlled system warns the pilot when the range limit is reached.

Are system is equipped with a failsafe system. Should there be a loss of signal this failsafe system is automatically activated. The helicopter is programmed to come home (the position where motors where started at take-off) and next a slow decent is started.

Ellipz X6 multirotor

Services

Tailor made systems:

If you should require any special needs for your system, please contact us.

Training and instructions:

We offer you individual pilot training.

Delivery:

Delivery time for a complete system is 2-3 weeks.

